



VESSELS SOLUTIONS

ENCOSA CONSULTANCY



ABOUT US

At ENCSA, we specialize in providing personalized consulting services for vessel charters and leases, connecting you directly with shipowners. Our commitment is to be your reliable support and direct link to vessel owners, ensuring a seamless experience without intermediaries and tailored solutions to meet your specific needs.

With a team of experts in the maritime industry, we offer comprehensive consulting services, from selecting the ideal vessel to negotiating terms and managing contracts. We take pride in delivering a transparent and efficient service, making the chartering or leasing process easy so you can focus on what really matters: your business.

Trust us to be your strategic partner in the world of projects and maritime service. With ENCSA, you navigate with security and confidence.





MISSION

To provide tailored consulting services in the maritime industry, directly connecting our clients with vessel owners to streamline the chartering and rental process with transparency, efficiency, and no intermediaries.



VISION

To become the leading maritime consulting firm in Latin America, known for our close relationships with vessel owners, customized solutions, and operational excellence in every maritime project.



VALUES

- Transparency
- Expertise
- Reliability
- Efficiency
- Client Focus
- Safety

TIPE OF VESSELS

MPSV DP2

DSV DP2

PSV DP2

OSV

AHTS

TUG BOATS

FSV

CREWBOAT

FPSO

JACK UPS

DRILLING BARGES

FLAT BARGES

DREDGER

CRANE VESSEL

OIL TANKER

MPSV DP2

Dimensions:

Length overall	984 m (94.3 m with helideck)
Cargo deck area	900 m ²
Deck cargo capacity	1800 t, 10 t
Depth 1st deck	7.6 m
Draft scantling	6.3 m (maximum)
Deadweight	4268 T
Tonnage	GRT 3465 T / NRT 1464 T
Crane	100 T
Accomodation	76
Helideck	Aluminium, Class B+, D value 20.9, SWL 12.8 t as per Cap-437 Helideck monitoring system – SecRec HMS Gyro motion sensor: SMC IMU 108

General information:

- > Year of construction: 1999
- > Port of registry: **Marshall Islands**
- > Class: **ABS A1, AMS, ACCU, DPS-2**



Dimensions:

Length	85.00m
Deck Cargo	800t
Deck Capacity	660m ²
Depth Moulded	8m
Draft Moulded	6.30m
Deadweight	3200 T
Heli-Deck	22m day
Crane	100 T
Accomodation	175

General information:

- > Year of construction: 2014
- > Class: ABS



MPSDSV

Dimensions:

Length overall	984 m (94.3 m with helideck)
Cargo deck area	900 m ²
Deck cargo capacity	1800 t, 10 t
Depth 1st deck	7.6 m
Draft scantling	6.3 m (maximum)
Deadweight	4268 T
Tonnage	GRT 3465 T / NRT 1464 T
Crane	100 T
Accommodation	76
Helideck	Aluminium, Class B+, D value 20.9, SWL 12.8 t as per Cap-437 Helideck monitoring system – SecRec HMS Gyro motion sensor: SMC IMU 108

General information:

- > Year of construction: 2018
- > Port of registry: Marshall Islands
- > Class: ABS A1, FFV 1, OSR-C1, SPS, SSR GR C 19, Supply-HNLS, AMS, ACCU, DPS-2, RW, UWILD



MPSV

Dimensions:

Length overall	86m
Length BP	75.60m
Breadth Moulded	20.00m
Depth Moulded	9.00m
Draft (Summer Loadline)	7.30m
Deck Strength	7.5 T/m ²
Clear Deck Area	Abt. 1,000m ²
Crane	160T
Accommodation	138

General information:

- > Year of construction: 2014
- > Flag: Singapore 399021
- > Class: ABS



MPSV DP2

Dimensions:

Length overall	78.00m
Length BP	69.60m
Beam Moulded	20.00m
Depth Moulded	8.00m
Draft designed	6m
Clear Deck Area	832m ²
Accommodation	194

General information:

- > Year of construction: 2014
- > Flag: Singapore
- > Class: ABS



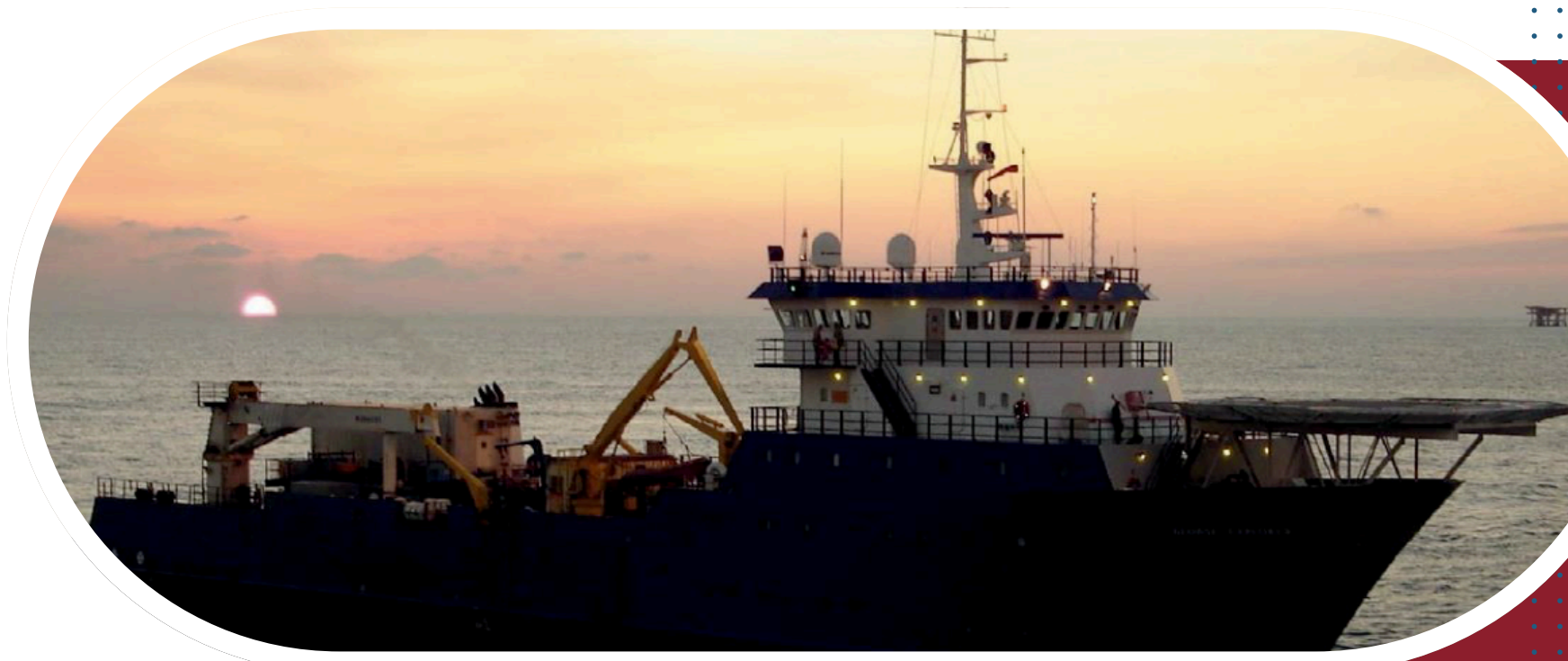
MPSV DP2

Dimensions:

Length overall	83.33 m
Cargo deck area	500 m ²
Deck cargo capacity	1800 t, 10 t
Breadth	13.72 m
Draft scantling	5.39 m
Deadweight	4268 T
Gross tonnage	2,704
Net tonnage	811
Crane	65 T
Accomodation	113
Helideck	12,000 Pounds / 5.44 T

General information:

- > Year of construction: 2002
- > Port of registry: Dos Bocas
- > Class: ABS A1-AMS-ACCU-DPS-2



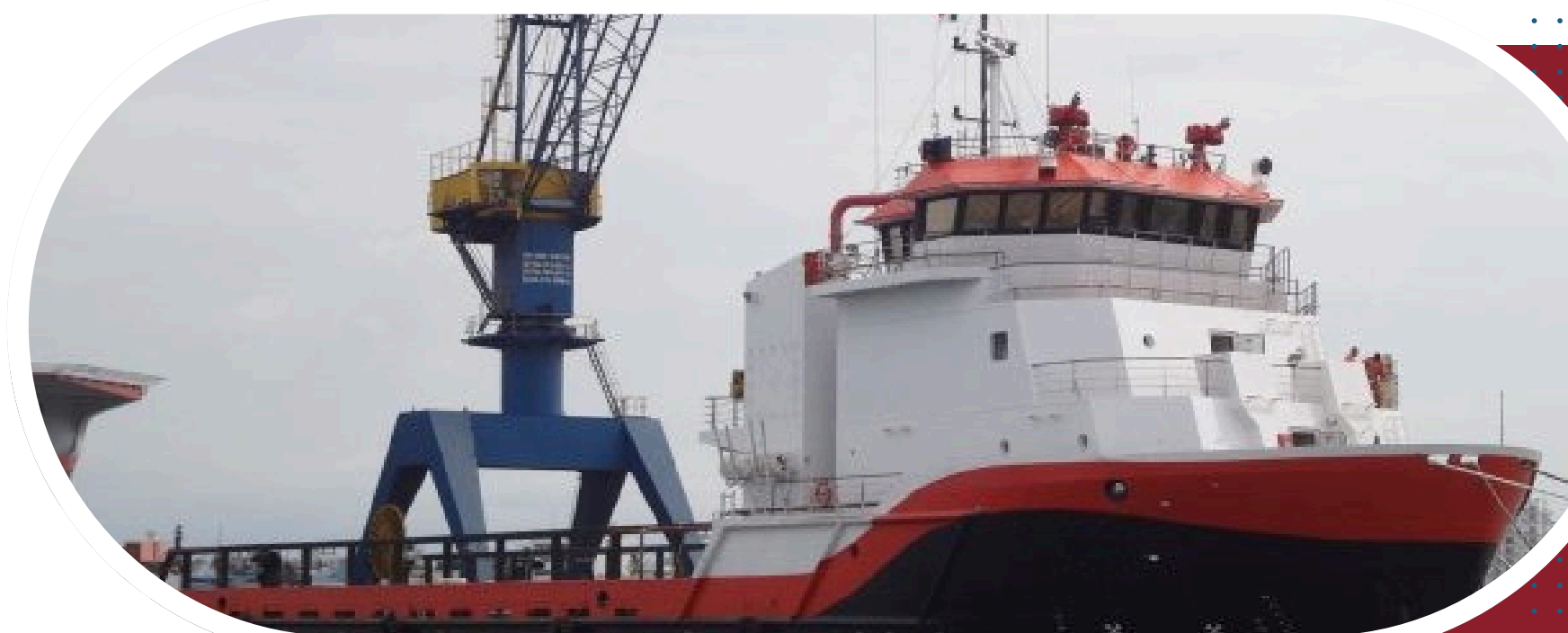
PSV DP2

Dimensions:

Length overall	66.62m
Beam	12.80
Depth to main deck	5.50m
Max draft	4.55m
Gross tonnage	450
Accommodation	30 crew included

General information:

- > Year of construction: 2009
- > Port of registry: Ciudad del Carmen, Cam.
- > Class: (LRS) 100A1, Fire Fighting 1 (2400 m3/h) with water spray, LMC, DP (AA).



CREWBOAT

Dimensions:

Hull	Aluminium
LOA	37.61m
Beam	7.92m
Depth	3.81m
Max. draft	2.01m
Gross tonnage	253 TRB
Net tonnage	75 TRN
Deadweight	222.93 T ²
Crew	8
Deck Cargo	70 T
Deck cargo area	140 m ²
Passenger	80

General information:

- > Year of construction: 1992
- > Port of registry: Isla del Carmen, Campeche
- > Class: Stanford Falcon



CREWBOAT

Dimensions:

Hull	Steel
LOA	33.53 m
Beam	7.31 m
Depth	3.20 m
Max. draft	1.80 m
Gross tonnage	150 TRB
Net tonnage	45 T
Deadweight	73.52 TM
Crew	5
Deck Cargo	50 T
Deck cargo area	84.70 m ²
Passenger	81

General information:

- > Year of construction: 1982
- > Port of registry: Isla del Carmen, Campeche
- > Class: Registro Italiano (RINA) C-Special Service, Special Navigation



CLV DP2

Dimensions:

LOA	81.9 m
Beam	18 m
Breadth Moulded	18 m
Summer draft	4.98 m
Gross tonnage	2610 TRB
Deadweight	2998 T
Deck Cargo	650 m ²
Strength fuel oil	5t/m ²
Accomodation	46 (26 for charter)
Cranes	1x 25t Knuckle Boom Offshore Crane 10tn at 20m max reach, 100m Hoisting Height Provisions cranes 5tn (x2)

General information:

- > Year of construction: 2024
- > Port of registry: Panama City
- > Class: RINA



ACCOMMODATION BARGE

Dimensions:

LOA	90.00 m
Breadth	30.00 m
Depth	6.10 m
Design draft	4 m
Deadweight	6000 MT
Deck load	10 ton
Clear deck area	1200 m ²
Helideck	Suitable for Sikorsky S61N
Crane	450 T crawler crane (Model: Kobelco 7450)
Accommodations	275

General information:

- > Year of construction: **OCTOBER 2011**
- > Flag: **Mauritius**
- > Classification: **ABS+1 Accommodation Barge DP2 Compliance with SPS Code 2008.**



ACCOMMODATION DP3

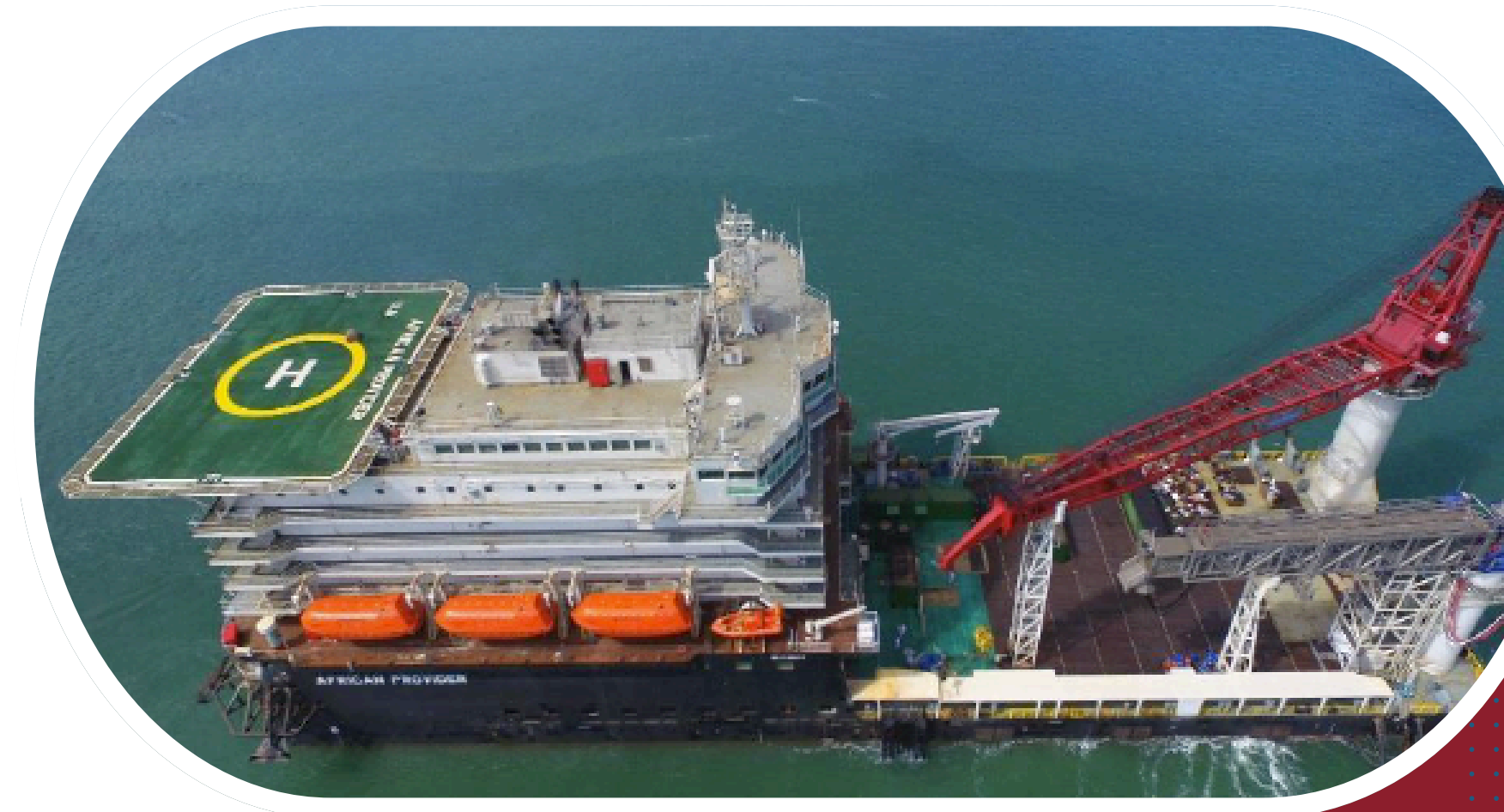
684man DP3 ACCOMMODATION / WORK BARGE

Dimensions:

LOA	115.50 m
Breadth	34 m
Depth	9.10 m
Design draft	5.50 m
Deadweight	6000 MT
Deck cargo area	1750 m ³
Gross tonnage	20047 T
Bollar pull	30
Crane	300 T
Accommodation	684

General information:

- > Year of construction: **2023**
- > Flag: **China**
- > Classification: **ABS**



AKALI ANCHOR HANDLING TUGS SUPPLY



AHTS

BHP: 5000

BP: 66 T

Clear deck area: 375 m²

DP: 1



AHTS

BHP: 5000

BP: 63 T

Clear deck area: 375 m²

DP: Upgrade to DP1 in progress



AHTS

BHP: 5954

BP: 72.3 T

Clear deck area: 500 m²

DP: 2



AHTS

BHP: 5954

BP: 82.8 T

Clear deck area: 500 m²

DP: 2



OCV DP3

Dimensions:

LOA	141.70 m
Breadth	28 m
Depth	9 m
Design draft	5.50 m
Deck cargo area	1980 m ³
Gross tonnage	5922 T
Bollar pull	185 BP
Crane	1000 T @25 - 27m
Accommodation	399

General information:

- > Year of construction: 2013
- > Flag: México
- > Class: ABS| ABS ⚡A1, (E), ⚡AMS ⚡ACCU, ⚡DPS-3 HELIDK



ENCSA SERVICES

DIRECT CONNEXION WITH SHIPOWNERS

- Comprehensive vessel logistics services
 - Vessel Management
 - Charter vessel



Additional Services – Specialized Maritime & Technical Support

MARITIME & PORT SERVICES

- Ship Repair
- Naval Maintenance
- Marine Supply Services
- Port works
- Dredging Operations
- Non - Destructive testing (NDT)
- Hoses and Industrial Components
- ÓNIX Valve Distribution



ENCSA'S strategic alliances

At ENCSA, we strengthen our services through **strategic alliances**, offering:

- Offshore & onshore engineering and civil works (water, drainage, roads).
- Tanker fleet management and chartering.
- Commissary & food supply services.
- Naval engineering (stability booklets, repairs, flag representation).
- Auxiliary equipment chartering & hose distribution.
- Non-destructive testing (NDT).

These partnerships allow us to deliver **integrated and efficient solutions** tailored to our clients' needs.



THANK YOU VERY MUCH



+52 938 134 2061 – +52 921 195 4457



direcciongeneral@encsa.mx



Ciudad del Carmen, Campeche México

